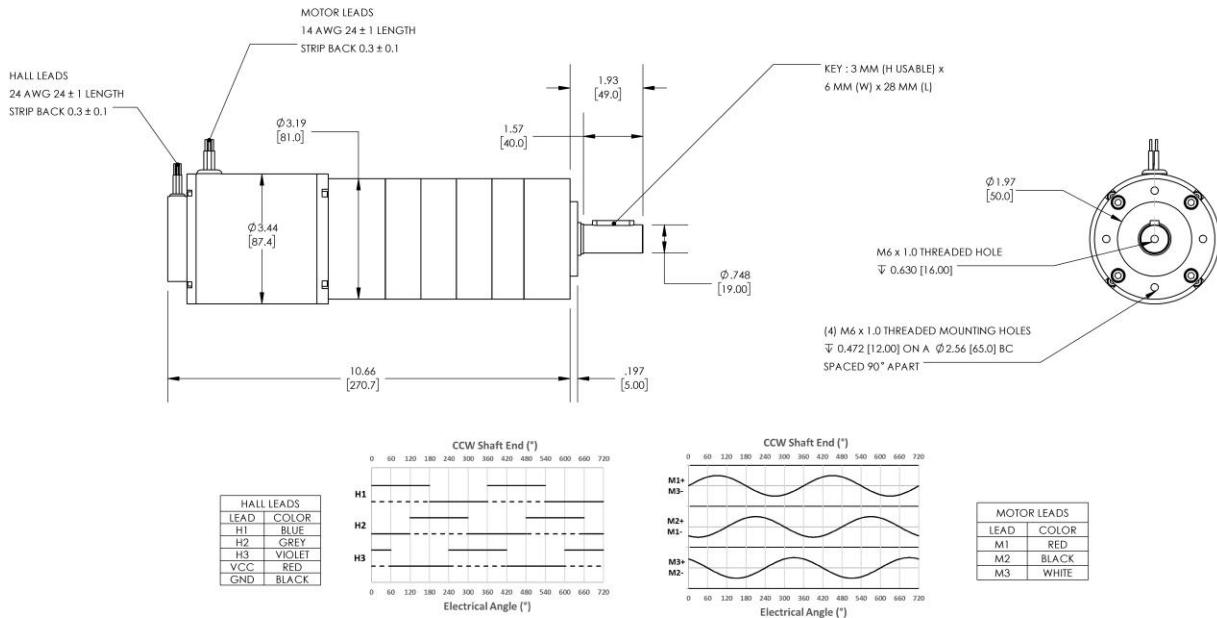


Model Number:
MMP BL86-425D-24V GP81-1140


DIMENSIONS ARE INCHES [MM] UNLESS OTHERWISE STATED

PLANETARY GEARMOTOR OUTPUT PARAMETERS:	VALUE	UNITS	TOLERANCE
Gearhead Ratio (exact)	1139.73 : 1		
Gearhead Shaft Output Speed (at full-load)	3.9	RPM	MAX
Gearmotor Rated Continuous Torque	2125	In-Lbs	MAX
Gearmotor Rated Peak Torque	2125++	In-Lbs	----
Gearhead Standard Backlash	39	Arc Minutes	MAX
Gearhead Efficiency	65%	----	----
Output Shaft Radial Load Capacity	293	Lbs	MAX
Output Shaft Axial Load Capacity	63	Lbs	MAX
Gearmotor Total Weight	13	Lbs	MAX

++ All Peak Torque values are dependent upon duty. Contact our sales office for details.

DC MOTOR PERFORMANCE PARAMETERS:	VALUE	UNITS	TOLERANCE
Rated DC Voltage	24	DC VOLTS	----
Rated Continuous Current	8.48	AMPERES	----
No-Load Speed	5000	RPM	MAX
Rated Speed	4420	RPM	+/- 15%
Rated Continuous Power Out	150	WATTS	+/- 15%
Rated Continuous Torque	46	OZ-IN	----
Peak Torque (motor only)	316	OZ-IN	----
No-Load Current	1.39	AMPERES	MAX
Back EMF Constant (Ke)	4.8	V/KRPM	+/- 10%
Torque Constant (Kt)	6.5	OZ-IN/AMP	+/- 10%
DC Armature Resistance	0.33	OHMS	+/- 15%
Armature Inductance	0.27	mH	+/- 15%
Armature temperature	155	DEG. C	MAX

NOTES:

- ENCODER & BRAKE OPTIONS AVAILABLE – [FOLLOW THIS LINK FOR DETAILS](#)
- NEMA MOUNTING FLANGE OPTION AVAILABLE – [FOLLOW THIS LINK FOR DETAILS](#)

MIDWEST MOTION PRODUCTS
DESIGN, MANUFACTURING & DISTRIBUTION - MOTION CONTROL EQUIPMENT
www.midwestmotion.com

 email: sales@midwestmotion.com